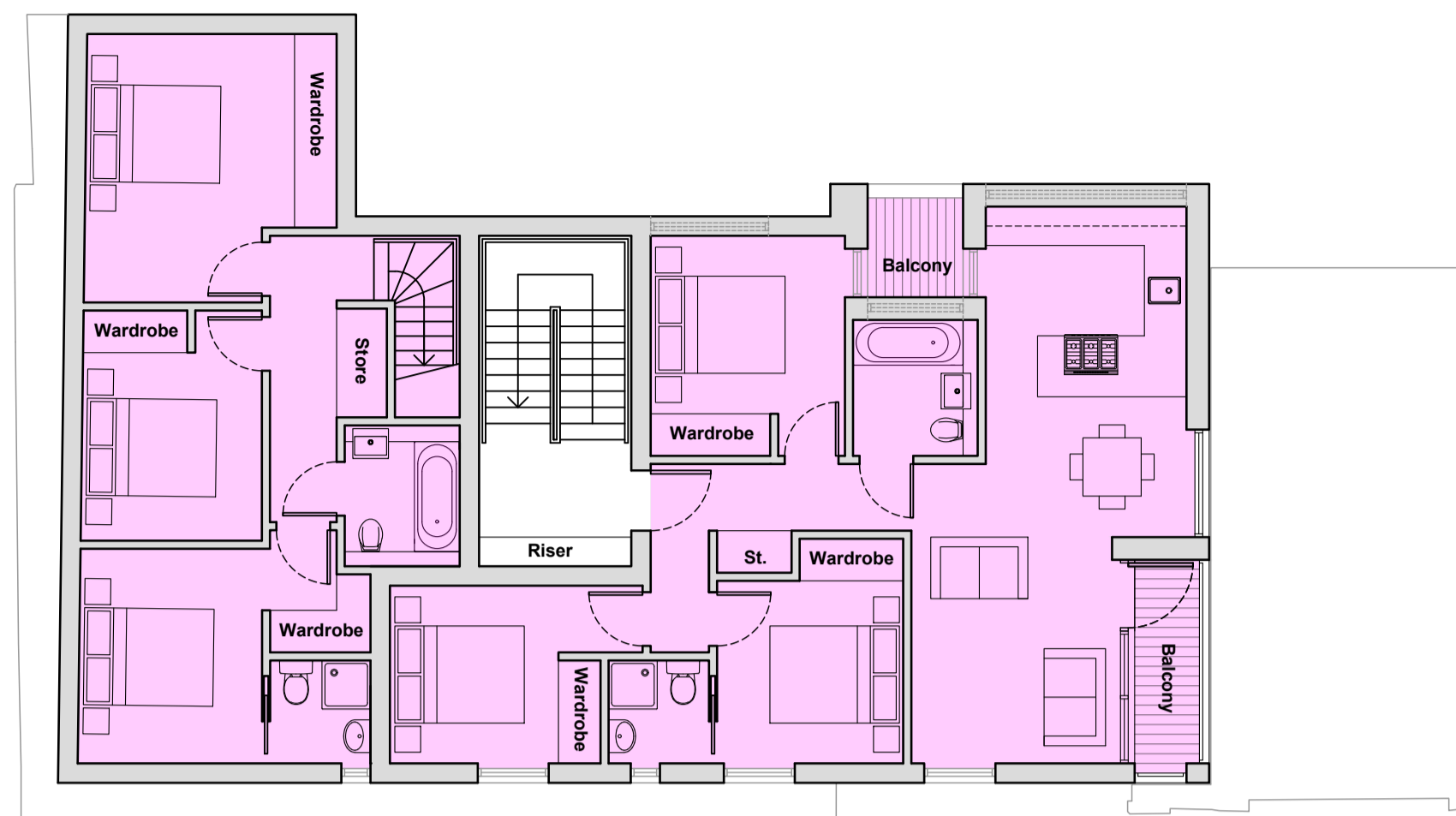


Do not scale from this Drawing.

The Contractor must verify all dimensions on site prior to commencing any works, purchase of specified items, and production of fabrication drawings. The contractor takes full responsibility in ensuring that all works executed are in accordance with the current Building Regulations. The Contractor is to advise the Architect of any errors or omissions. No party should take dimensions digitally from this drawing. No variations or modifications to work shown shall be implemented without prior written approval. All issues of this drawing are superseded by the latest revision. All drawings and specifications remain the property of the Staran Architects Ltd.

All drawings to be read in conjunction with the project Health and Safety Plan, any conflicts should be presented to the projects Principal Designer.

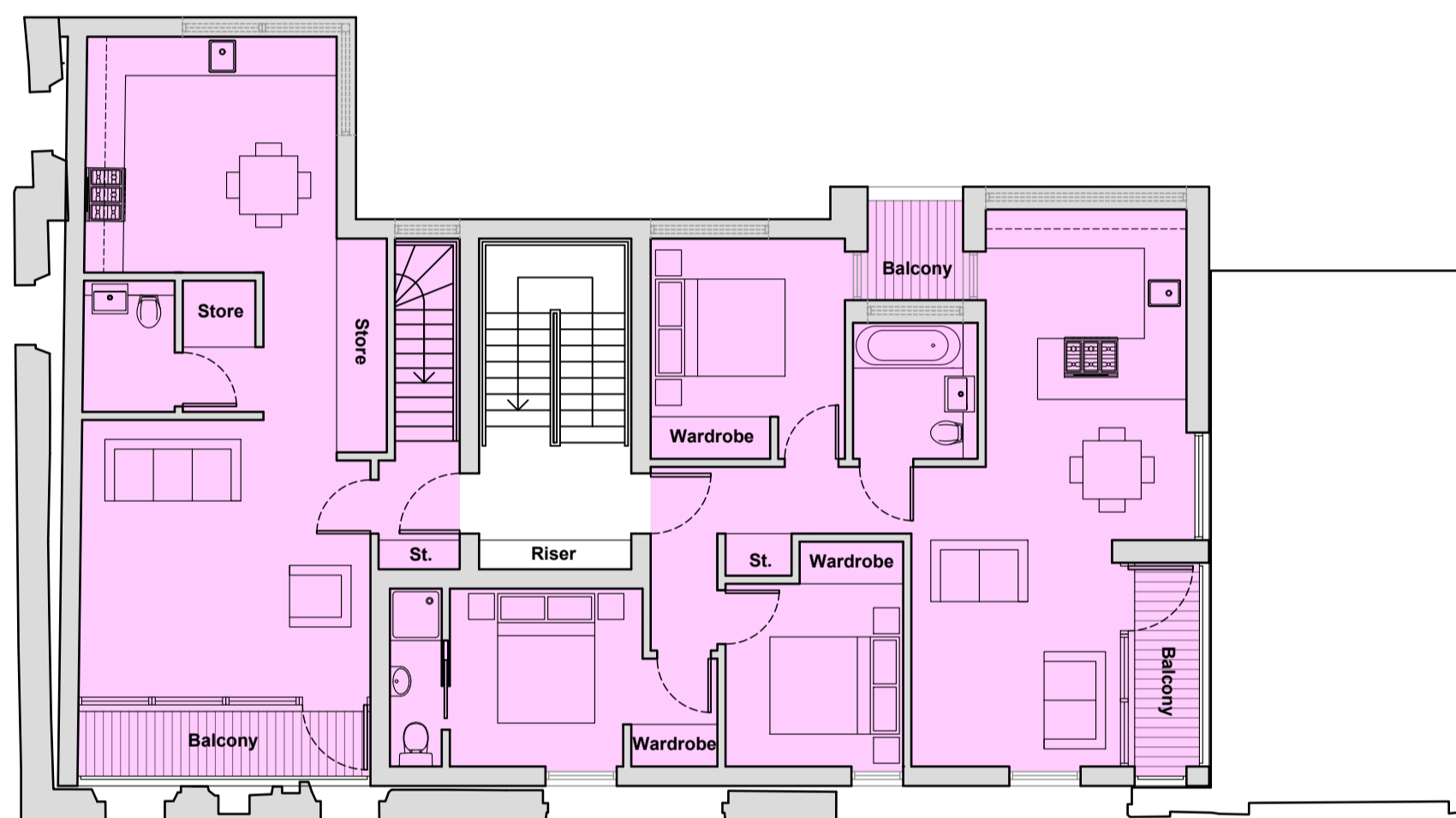
© STARAN Architects Ltd



Unit 03

Unit 05

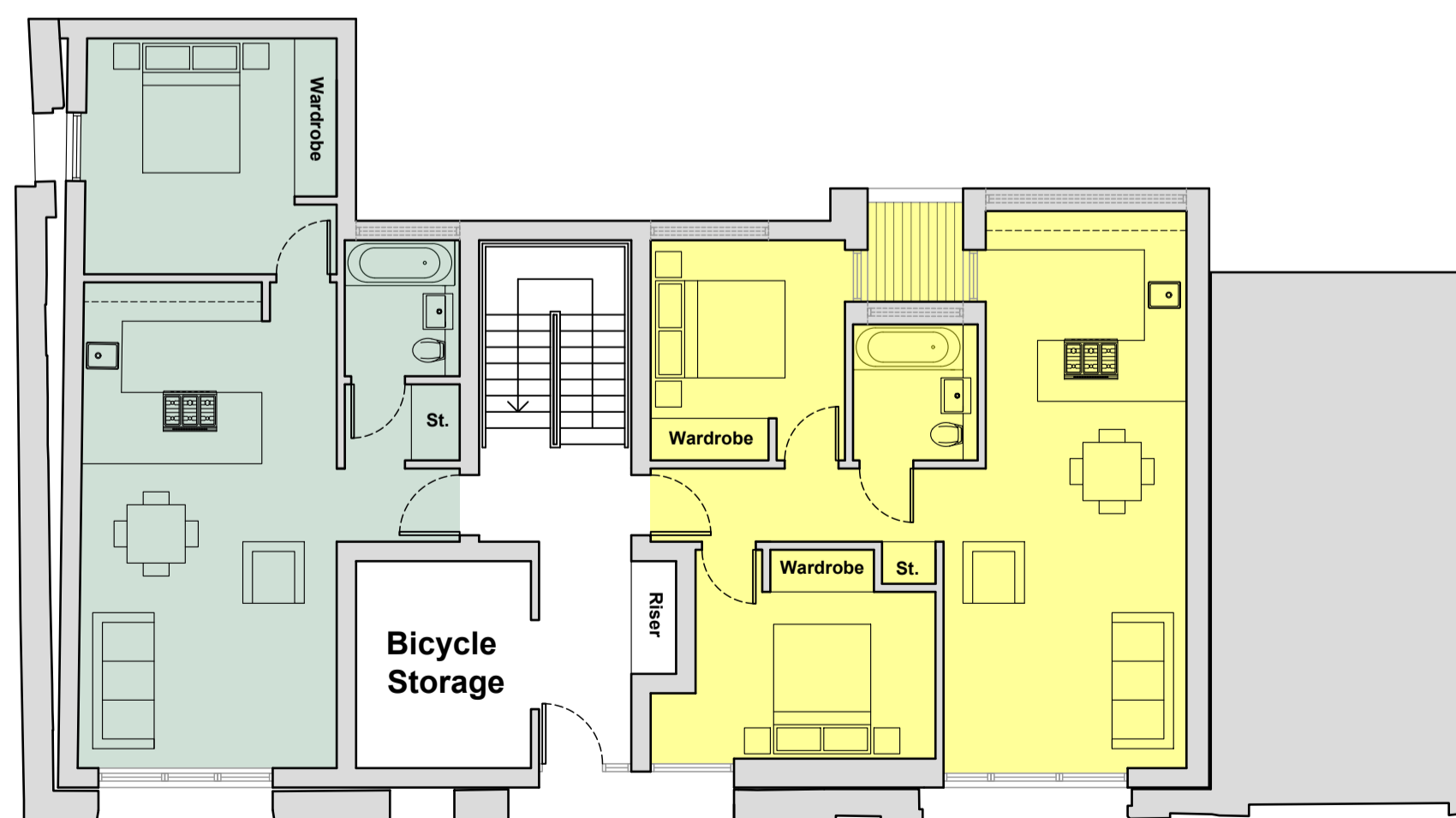
Second Floor Layout



Unit 03

Unit 04

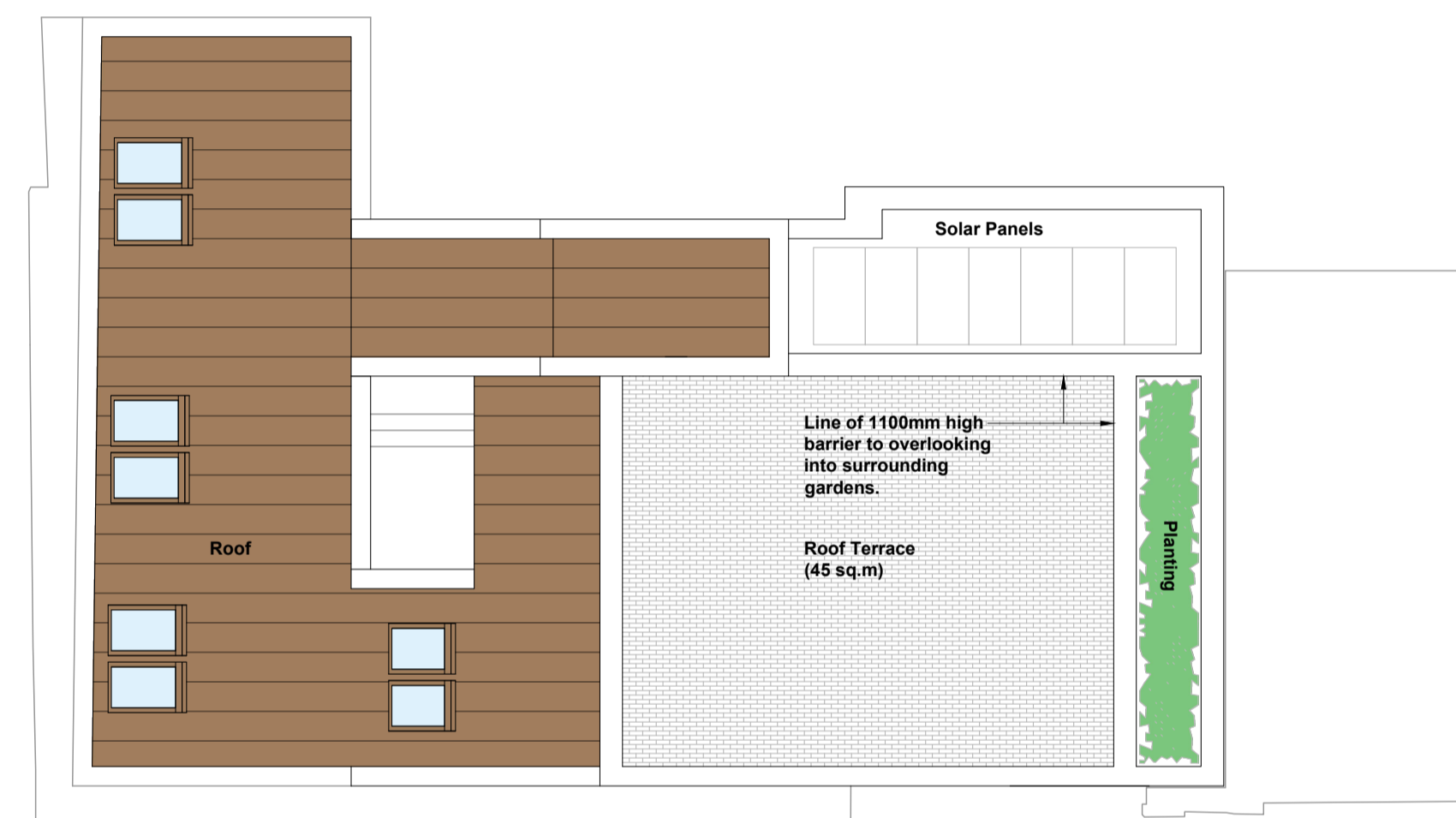
First Floor Layout



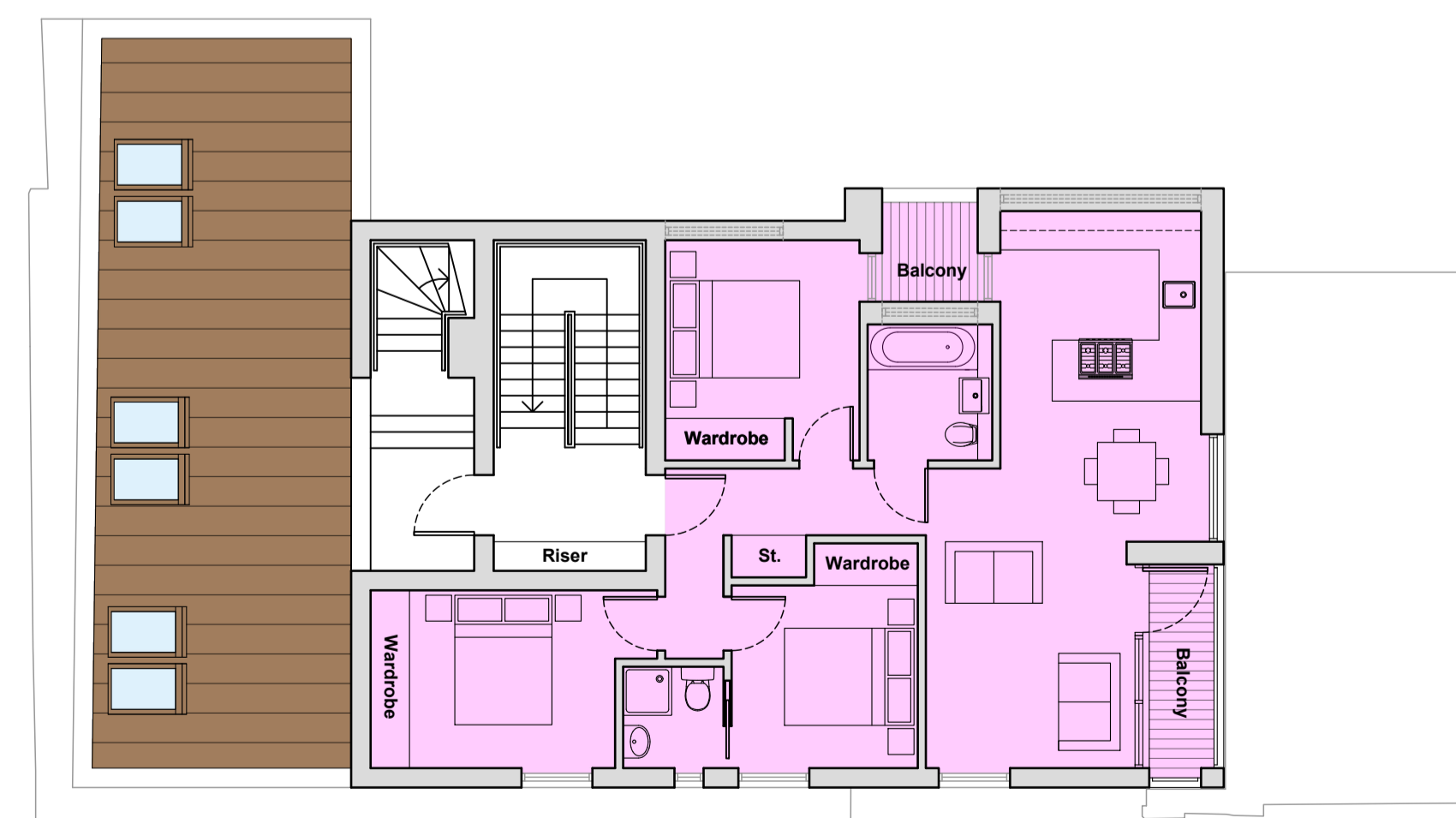
Unit 01

Unit 02

Ground Floor Layout



Roof Terrace Layout



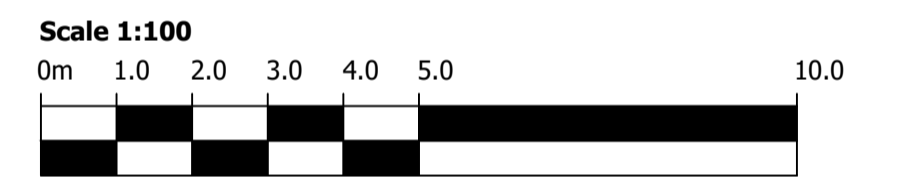
Unit 06

Third Floor Layout

Minimum City Edinburgh Council Design Standards:	Area:
1 Bed Studio	36 m ²
1 Bedroom Flat	52 m ²
2 Bedroom Flat	66 m ²
3 Bedroom Flat	81 m ²

Accommodation Schedule 4:	No:
1 Bedroom Flat	1
2 Bedroom Flat	1
3 Bedroom Flat	4
Total:	6

Unit Area	Area:
Unit 01 (1 Bed)	52
Unit 02 (2 Bed)	68
Unit 03 (3 Bed)	107
Unit 04 (3 Bed)	82
Unit 05 (3 Bed)	82
Unit 06 (3 Bed)	83



REV	Notes	Date

Project
Proposed Development at
8 Pittville Street Lane, Portobello, Edinburgh, EH15 2BY
for Scydonia Ltd.

Drawing Title
Proposed Floor Layouts

Job Number	Drawing Number	Revision	Scale @ A1
2331	GA(SK)006	-	1:100

INFORMATION

STARAN
ARCHITECTS