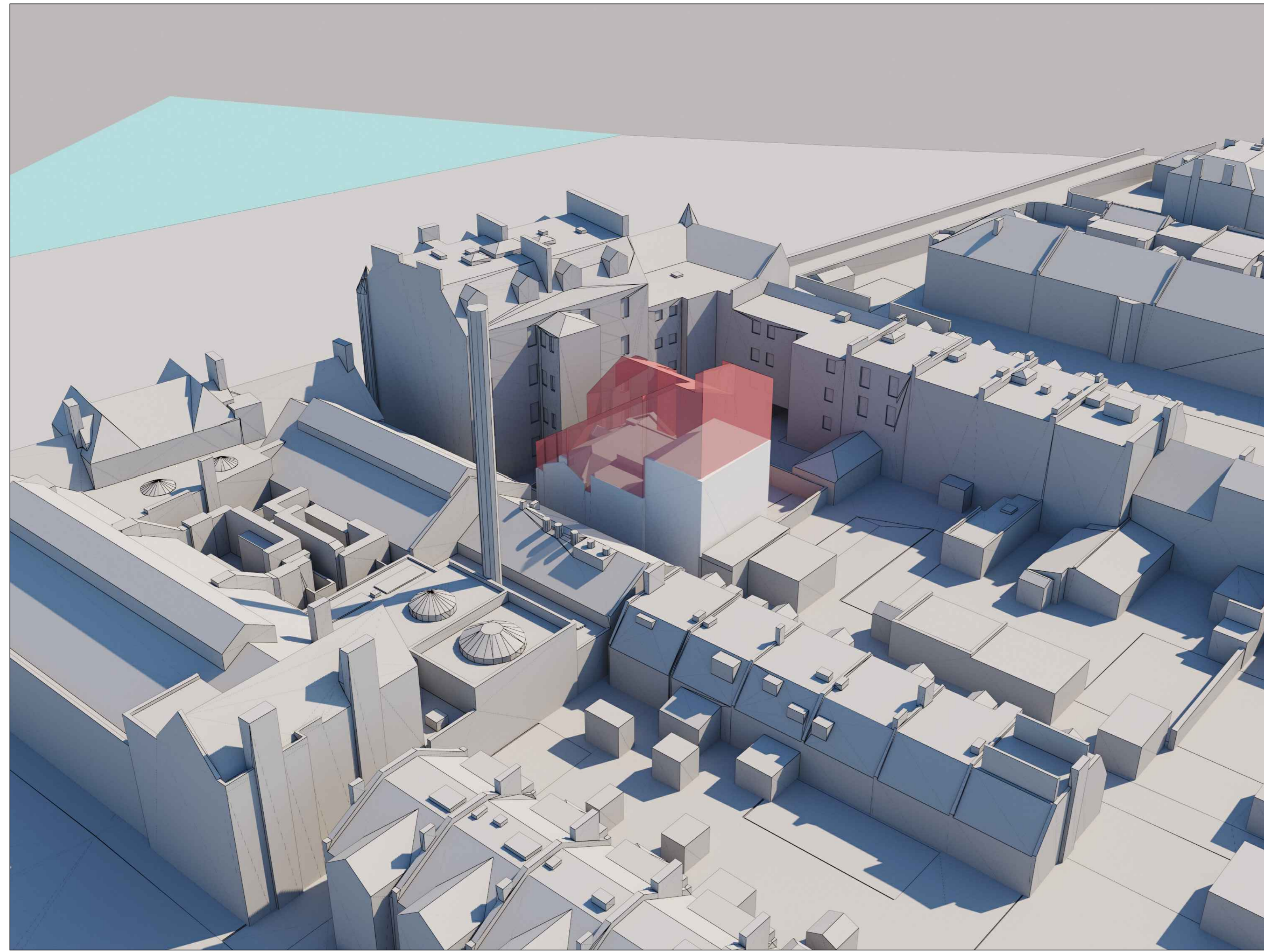


Do not scale from this Drawing.

The Contractor must verify all dimensions on site prior to commencing any works, purchase of specified items, and production of fabrication drawings. The contractor takes full responsibility in ensuring that all works executed are in accordance with the current Building Regulations. The Contractor is to advise the Architect of any errors or omissions. No party should take dimensions directly from this drawing. No variations or modifications to work shown shall be implemented without prior written approval. All issues of this drawing are superseded by the latest revision. All drawings and specifications remain the property of the Staran Architects Ltd.

All drawings to be read in conjunction with the project Health and Safety Plan, any conflicts should be given to the project Principal Designer.

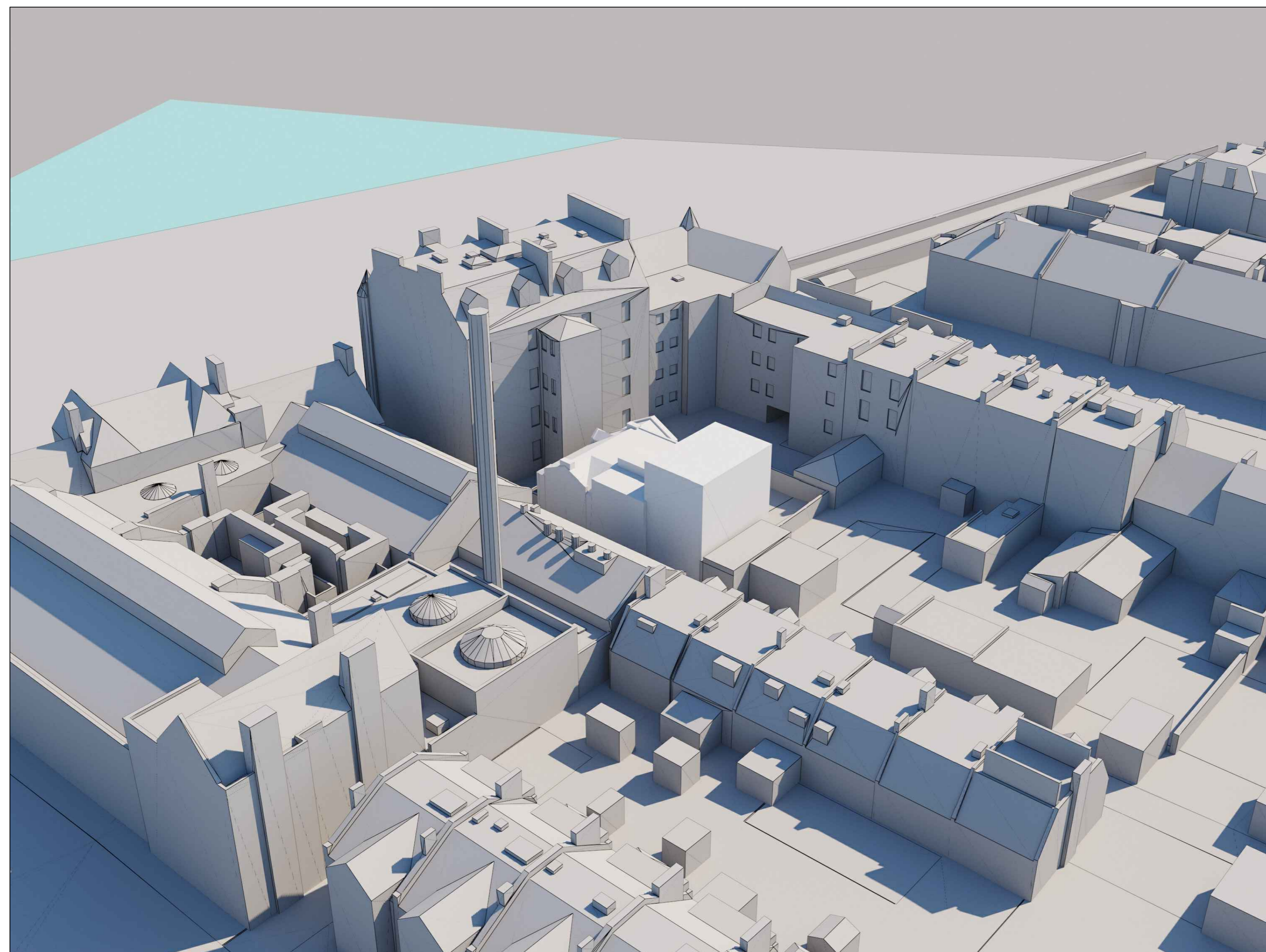
© STARAN Architects Ltd



Existing massing with superimposed model illustrating extent of protected daylight amenity to surrounding residential buildings.



Proposed massing with superimposed model illustrating extent of protected daylight amenity to surrounding residential buildings.



Existing Massing



Proposed Massing

REV	Notes	Date
-----	-------	------

Project
Proposed Development at
8 Pittville Street Lane, Portobello, Edinburgh, EH15 2BY
for Scydonia Ltd.

Drawing Title
Massing Study

Job Number Drawing Number Revision Scale @ A0

2331 GA(SK)012 - -

INFORMATION

STARAN
ARCHITECTS

49 Cumberland St Edinburgh EH3 6RA / T: 0131 556 9830 / E: info@staranarchitects.com